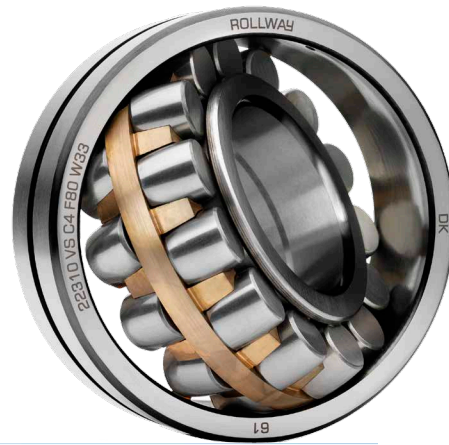
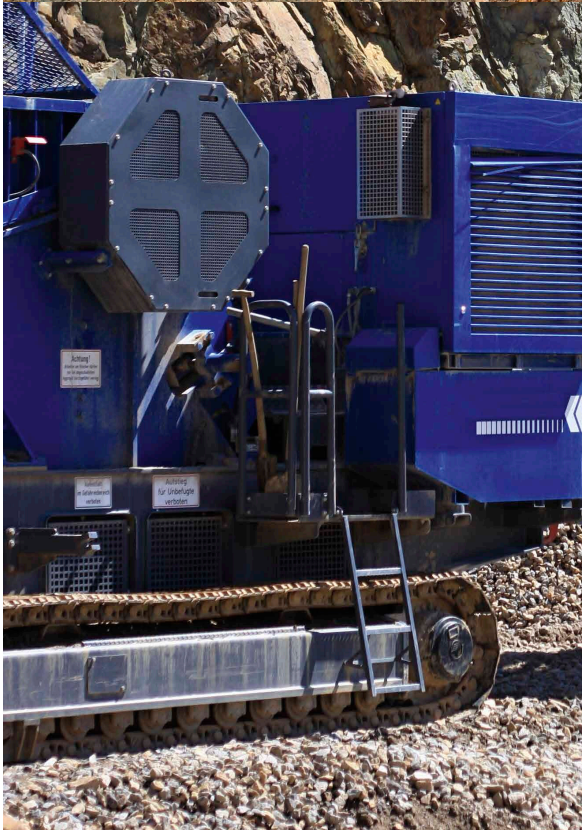


ROLLWAY®



ROLLWAY®

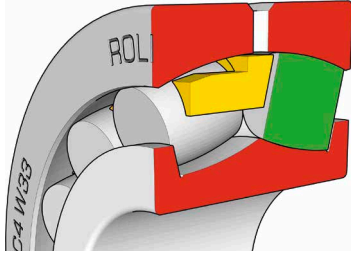
**Vibration screen
bearings**



REGAL

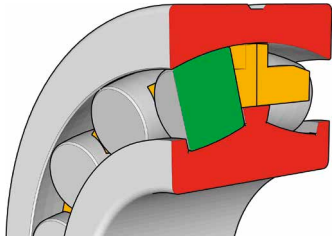
Design Overview Table

223XX VS C4 F80 W33



- VS:
 - Single piece solid brass cage, guided on the outer ring raceway.
 - Asymmetric position of the rollers in the cage.
 - The inner ring has 2 flanges.
 - Range: from 40mm to 150mm bore diameter.

223XX MA C4 F80 W33



- MA:
 - Two piece brass cage, guided on the outer ring raceway.
 - The inner ring has 3 flanges.
 - Range: over 150mm to 200mm bore diameter.
- K
 - Tapered bore.
- C4:
 - Specific radial clearance field.
- F80:
 - Reduced tolerance field for bore and outer diameter.
- W33
 - Lubrication groove and 3 holes in the outer ring.
- Typical application: crushers, feeders, vibration tables, mining process equipment.

| F80 Tolerance | | | | | | C4 Radial clearance | | | |
|---------------|--------|--------|--------|--------|--------|---------------------|-------|-------|-------|
| d | Min | Max | D | Min | Max | d | Min | Max | |
| 40 | 0 | -0.007 | 90 | -0.005 | -0.013 | 40 | 0.085 | 0.100 | |
| 45 | | | 100 | | | 45 | | | |
| 50 | | | 110 | | | 50 | | | |
| 55 | | -0.009 | 120 | | | -0.018 | 55 | 0,100 | 0,120 |
| 60 | | | 130 | | | | 60 | | |
| 65 | | | 140 | | | | 65 | | |
| 70 | | | 150 | | | | 70 | | |
| 75 | | | 160 | | | | 75 | | |
| 80 | | | 170 | | | | 80 | | |
| 85 | | -0.012 | 180 | -0.010 | -0.023 | 85 | 0,120 | 0,145 | |
| 90 | | | 190 | | | 90 | | | |
| 95 | | | 200 | | | 95 | | | |
| 100 | | | 215 | | | 100 | | | |
| 110 | | -0.015 | 240 | -0.013 | -0.028 | 110 | 0,150 | 0,180 | |
| 120 | | | 260 | | | 120 | | | |
| 130 | | | 280 | | | 130 | | | |
| 140 | | | 300 | | | 140 | | | |
| 150 | | | 320 | | | 150 | | | |
| 160 | | | 340 | | | 160 | | | |
| 170 | 360 | | 170 | | | | | | |
| 180 | -0.018 | 380 | -0.010 | -0.028 | 180 | 0,180 | 0,210 | | |
| 190 | | 400 | | | 190 | | | | |
| | | | | | | 190 | 0,205 | 0,240 | |
| | | | | | | 150 | 0,240 | 0,280 | |
| | | | | | | 160 | 0,260 | 0,310 | |
| | | | | | | 170 | 0,285 | 0,340 | |

Spherical Roller Bearing for Vibration Screen application

ROLLWAY

DATA 223XX – VS C4 F80 W33 / MA C4 F80 W33

| Type | Cage | Dimensions | | | | Load ratings | | Speed | | Calculation factors | | | | Weight kg |
|-------|------|------------|-----|-----|-----|--------------|------|-------|------|---------------------|-----|-----|-----|--------------|
| | | d | D | B | rs | Cr | Cor | rpm | rpm | e | Y1 | Y2 | Y0 | |
| 22308 | VS | 40 | 90 | 33 | 1,5 | 125 | 135 | 5300 | 6300 | 0,39 | 1,8 | 2,6 | 1,7 | 1,05 |
| 22309 | VS | 45 | 100 | 36 | 1,5 | 153 | 179 | 4800 | 5800 | 0,37 | 1,8 | 2,7 | 1,8 | 1,41 |
| 22310 | VS | 50 | 110 | 40 | 2,0 | 193 | 226 | 4600 | 5600 | 0,37 | 1,8 | 2,7 | 1,8 | 1,91 |
| 22311 | VS | 55 | 120 | 43 | 2,0 | 226 | 268 | 4000 | 4800 | 0,36 | 1,9 | 2,8 | 1,8 | 2,37 |
| 22312 | VS | 60 | 130 | 46 | 2,1 | 262 | 313 | 3800 | 4400 | 0,36 | 1,9 | 2,8 | 1,8 | 2,94 |
| 22313 | VS | 65 | 140 | 48 | 2,1 | 285 | 330 | 3600 | 4200 | 0,35 | 1,9 | 2,9 | 1,9 | 3,67 |
| 22314 | VS | 70 | 150 | 51 | 2,1 | 340 | 420 | 3600 | 4000 | 0,34 | 2,0 | 2,9 | 1,9 | 4,39 |
| 22315 | VS | 75 | 160 | 55 | 2,1 | 380 | 475 | 3000 | 3600 | 0,35 | 2,0 | 2,9 | 1,9 | 5,35 |
| 22316 | VS | 80 | 170 | 58 | 2,1 | 420 | 335 | 2800 | 3400 | 0,34 | 2,0 | 2,9 | 1,9 | 6,41 |
| 22317 | VS | 85 | 180 | 60 | 3,0 | 462 | 591 | 2500 | 3200 | 0,34 | 2,0 | 3,0 | 2,0 | 7,47 |
| 22318 | VS | 90 | 190 | 64 | 3,0 | 530 | 677 | 2600 | 3000 | 0,34 | 2,0 | 3,0 | 2,0 | 8,56 |
| 22319 | VS | 95 | 200 | 67 | 3,0 | 568 | 744 | 2200 | 2800 | 0,34 | 2,0 | 3,0 | 2,0 | 10,31 |
| 22320 | VS | 100 | 215 | 73 | 3,0 | 670 | 880 | 2200 | 2600 | 0,34 | 2,0 | 2,9 | 1,9 | 13,21 |
| 22322 | VS | 110 | 240 | 80 | 3,0 | 800 | 1060 | 1800 | 2200 | 0,35 | 2,0 | 2,9 | 1,9 | 18,01 |
| 22324 | VS | 120 | 260 | 86 | 3,0 | 930 | 1230 | 1700 | 2000 | 0,34 | 2,0 | 3,0 | 2,0 | 22,49 |
| 22326 | VS | 130 | 280 | 93 | 4,0 | 1080 | 1465 | 1600 | 1900 | 0,33 | 2,0 | 3,0 | 2,0 | 27,63 |
| 22328 | VS | 140 | 300 | 102 | 4,0 | 1240 | 1720 | 1400 | 1500 | 0,35 | 2,0 | 2,9 | 1,9 | 35,92 |
| 22330 | VS | 150 | 320 | 108 | 4,0 | 1400 | 1940 | 1000 | 1300 | 0,38 | 1,7 | 2,6 | 1,7 | 44,3 |
| 22332 | MA | 160 | 340 | 114 | 4,0 | 1520 | 2160 | 900 | 1200 | 0,37 | 1,8 | 2,7 | 1,8 | 50,08 |
| 22334 | MA | 170 | 360 | 120 | 4,0 | 1690 | 2380 | 850 | 1100 | 0,37 | 1,8 | 2,7 | 1,8 | 60,1 |
| 22336 | MA | 180 | 380 | 126 | 4,0 | 1900 | 2700 | 850 | 1100 | 0,37 | 1,8 | 2,7 | 1,8 | 71,8 |
| 22338 | MA | 190 | 400 | 132 | 5,0 | 2060 | 2920 | 750 | 1000 | 0,36 | 1,8 | 2,7 | 1,8 | 78,5 |
| 22340 | MA | 200 | 420 | 138 | 5,0 | 1910 | 2750 | 670 | 900 | 0,36 | 1,8 | 2,8 | 1,8 | 97,28 |

VS for $d \leq 150\text{mm}$ / MA for $d \geq 150\text{mm}$

REGAL

Regal Beloit Belgium NV
Power Transmission Solutions
Heiveldekens 16
2550 Kontich, Belgium
E info@rollway-bearing.be
T +32(0)3 457 68 70
F +32(0)3 457 51 38
www.regalpts.com

Authorized Dealer:



REGAL

